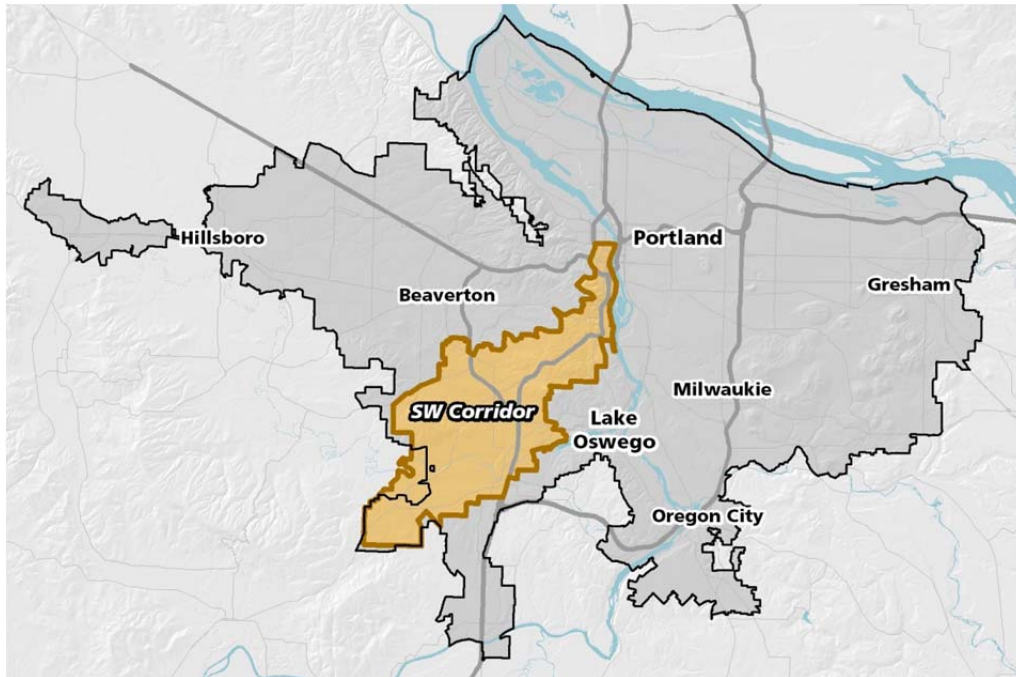


Do you live or work in the Southwest corridor? What makes it difficult to get around? What do you want more of? What do you want less of? Tell us what you think now, so that your input shapes future investments in your community.



Our new interactive planning game, Shape Southwest, gives you the opportunity to participate in the decision making process between Nov. 13 and Dec. 31. How would you invest in things like transportation improvements, parks and habitat, sidewalks, bikeways and roads? How would these investments affect safety, health, prosperity, access and mobility, while giving commuters better options to get where they need to go?

The Southwest Corridor Plan is a comprehensive planning effort to create livable and sustainable communities along the corridor between Portland and Sherwood through integrated community investments in land use and transportation.

We are committed to work together to plan for the future.

The result of working together will support your community's vision, provide more travel options, lead to less time in our cars and, ultimately, more time with our families.

Learn more about the Southwest Corridor Plan at www.oregonmetro.gov/southwestcorridor